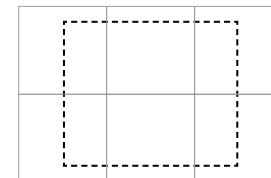




Omni® Concourse

Approximately 6 tiles shown
For full technical specifications see p233

Module = 457.2 x 457.2 mm
Yarn Weight = 650 g/m²
Pile Height = 3.6 mm
Tuft Density = 96,400 per m²
Total Thickness = 10.2 mm
Total Weight = 4000 g/m²



Each image shows 6 tiles
with the visible area shown
by the dotted line.



On request

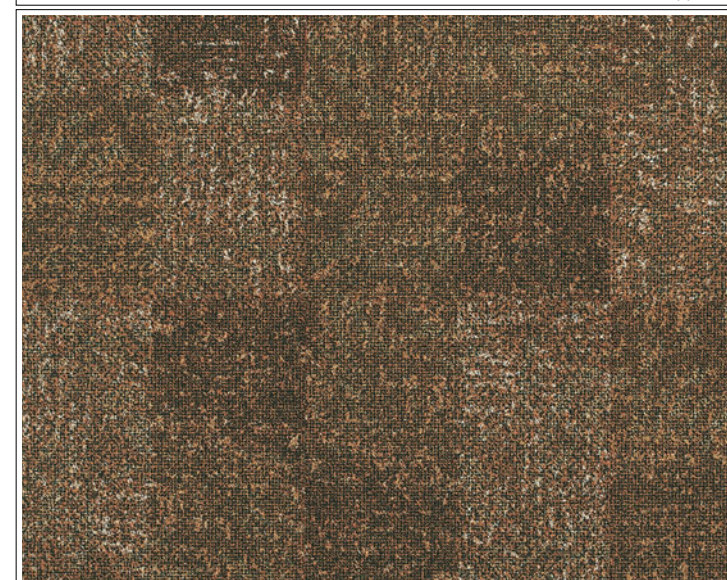
Pull out flap from back cover to
see explanations of symbols



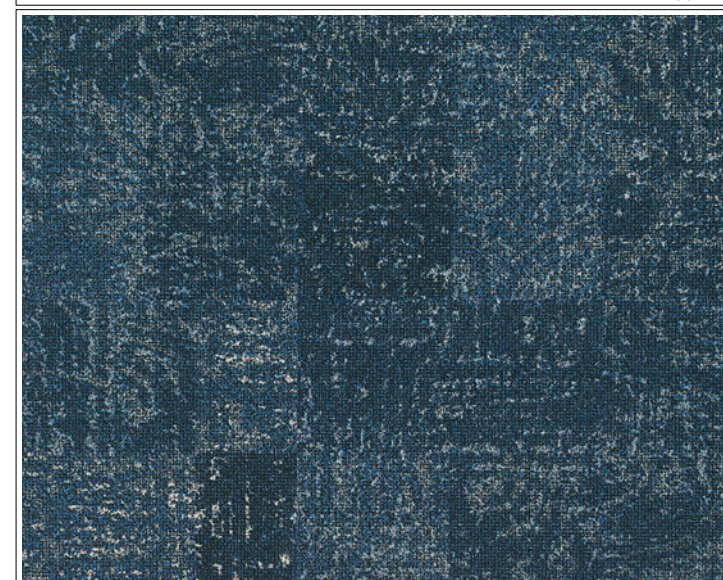
P.1004-243



P.1004-251



P.1004-245

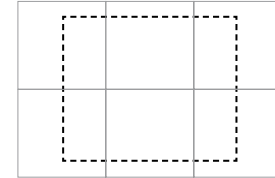


P.1004-240

Omni® Concourse

Approximately 6 tiles shown
For full technical specifications see p233

Module = 457.2 x 457.2 mm
Yarn Weight = 650 g/m²
Pile Height = 3.6 mm
Tuft Density = 96,400 per m²
Total Thickness = 10.2 mm
Total Weight = 4000 g/m²



Each image shows 6 tiles
with the visible area shown
by the dotted line.



On request

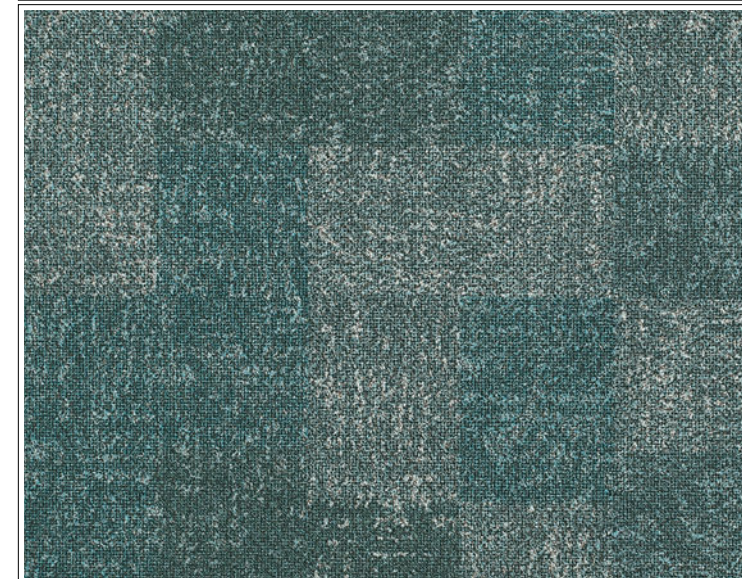
Pull out flap from back cover to
see explanations of symbols



P.1004-249



P.1004-246



P.1004-250

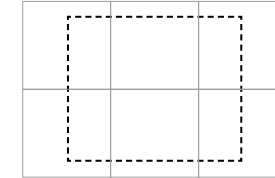


P.1004-248

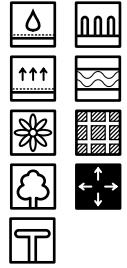
Omni® Concourse

Approximately 6 tiles shown
For full technical specifications see p233

Module = 457.2 x 457.2 mm
Yarn Weight = 650 g/m²
Pile Height = 3.6 mm
Tuft Density = 96,400 per m²
Total Thickness = 10.2 mm
Total Weight = 4000 g/m²



Each image shows 6 tiles
with the visible area shown
by the dotted line.



On request

Pull out flap from back cover to
see explanations of symbols



P.1004-244



P.1004-247



P.1004-241



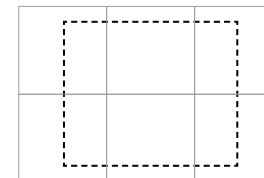
P.1004-242



Omni® Sway

Approximately 6 tiles shown
For full technical specifications see p233

Module = 457.2 x 457.2 mm
Yarn Weight = 650 g/m²
Pile Height = 3.6 mm
Tuft Density = 96,400 per m²
Total Thickness = 10.2 mm
Total Weight = 4000 g/m²



Each image shows 6 tiles
with the visible area shown
by the dotted line.



On request

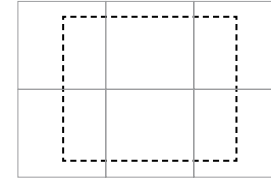
Pull out flap from back cover to
see explanations of symbols



Omni® Sway

Approximately 6 tiles shown
For full technical specifications see p233

Module = 457.2 x 457.2 mm
Yarn Weight = 650 g/m²
Pile Height = 3.6 mm
Tuft Density = 96,400 per m²
Total Thickness = 10.2 mm
Total Weight = 4000 g/m²



Each image shows 6 tiles with the visible area shown by the dotted line.

On request

-
-
-
-
-
-
-
-
-

Pull out flap from back cover to see explanations of symbols



P.1004-235



P.1004-234



P.1004-230



P.1004-231





Pull out flap from back cover to see explanations of symbols



On request

Riverbed/Seashore & Water

Full tiles shown

For full technical specifications see p234

Module = 457.2 x 457.2 mm

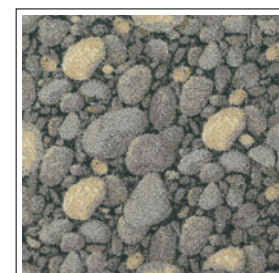
Yarn Weight = 560 g/m²

Pile Height = 3.3 mm

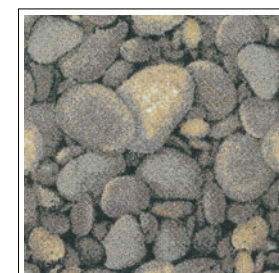
Tuft Density = 155,000 per m²

Total Thickness = 10.2 mm

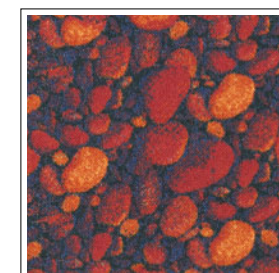
Total Weight = 4000 g/m²



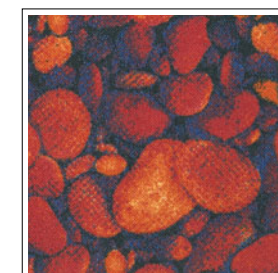
RIVERBED P .1337-1



SEASHORE P .1337-2



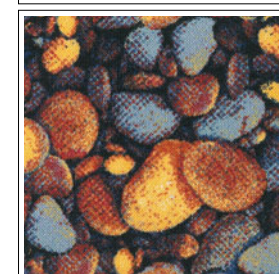
RIVERBED P .1337-8854



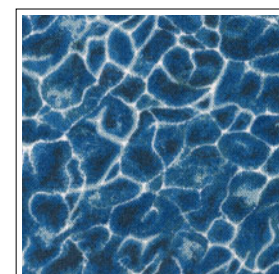
SEASHORE P .1337-8855



RIVERBED P .1337-8902



SEASHORE P .1337-8903



WATER P .1325-5135





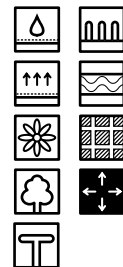
Comfortable Concrete

Full tiles shown
For full technical specifications see p234

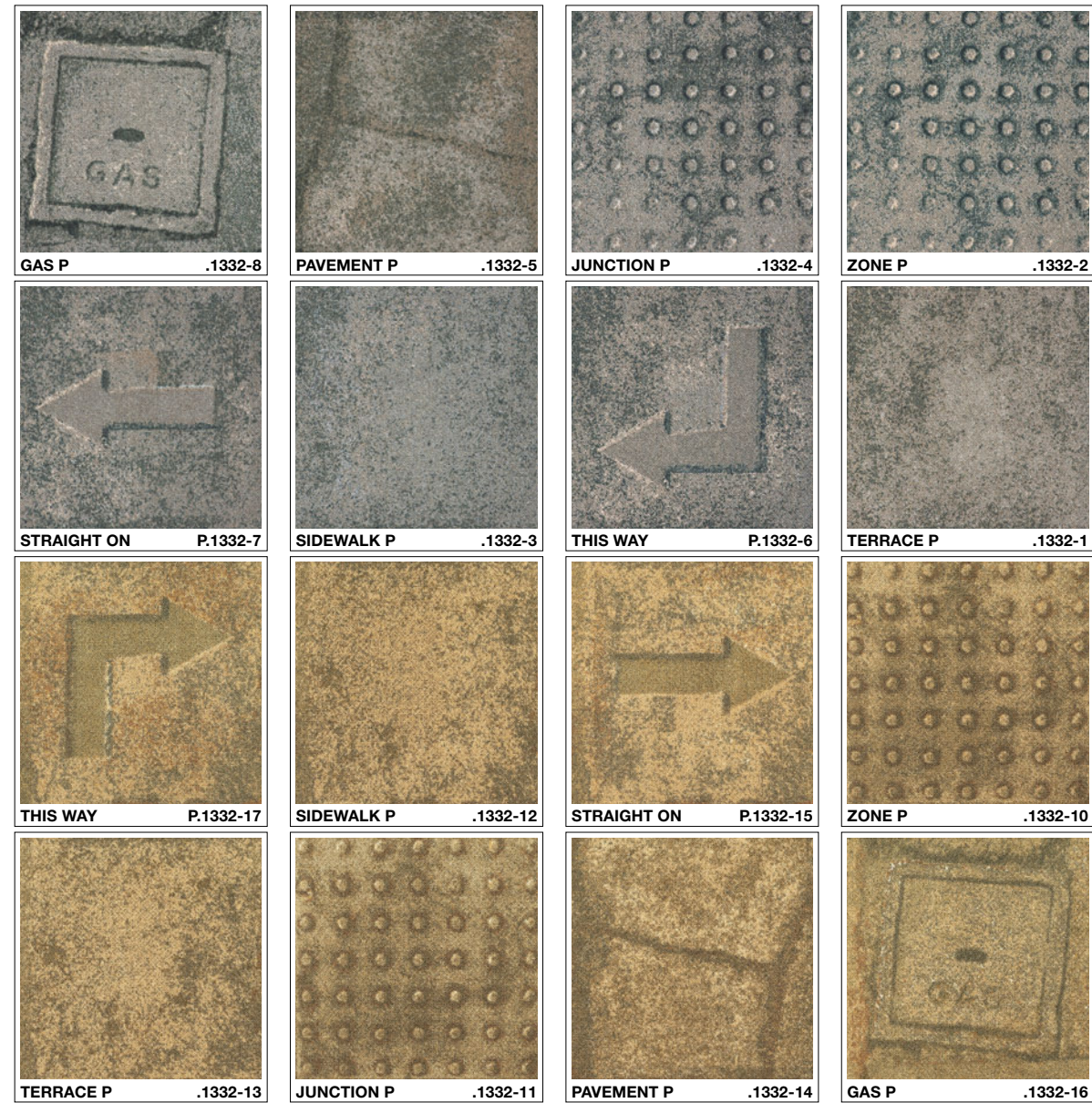
Module = 457.2 x 457.2 mm
Yarn Weight = 560 g/m²
Pile Height = 3.3 mm
Tuft Density = 155,000 per m²
Total Thickness = 10.2 mm
Total Weight = 4000 g/m²

This concrete is so comfortable you will want to sit on it! Created in collaboration with Wayne and Gerardine Hemingway, this design allows you to inject some fun onto the floor. Created on Milliken's Comfort Plus²⁰⁰ cushion backing, it offers exceptional wear performance, sound absorbency, compression recovery and, of course, comfort. Its six flexible elements also mean that you have the ability to choose a number of different looks.

Pull out flap from back cover to see explanations of symbols



On request



Comfortable Concrete

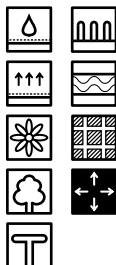
Full tiles shown

For full technical specifications see p234

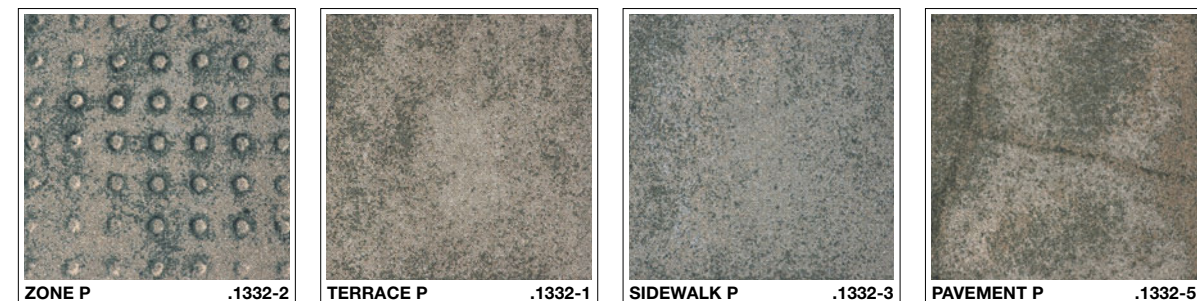
Module = 457.2 x 457.2 mm
 Yarn Weight = 560 g/m²
 Pile Height = 3.3 mm
 Tuft Density = 155,000 per m²
 Total Thickness = 10.2 mm
 Total Weight = 4000 g/m²

Comfortable Concrete can be ordered as individual elements (min. order 1 box 3.34m²) or as one of the following two assortments:

Pull out flap from back cover to see explanations of symbols



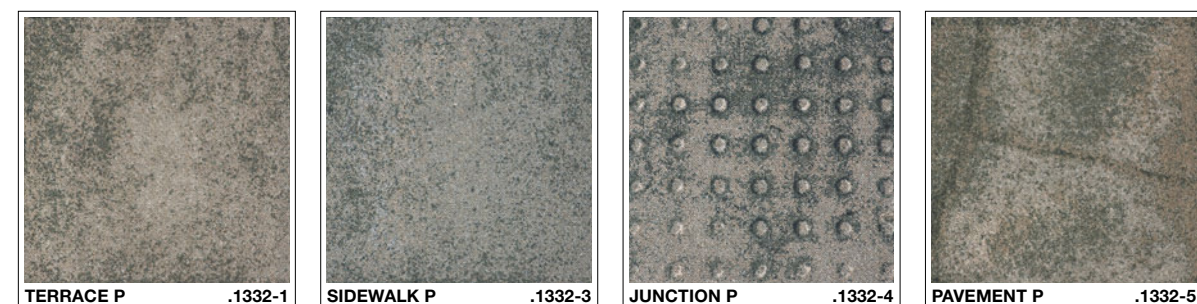
On request



Assortment A (Grey) – P.1001-46, which includes:

- Zone 10%
- Terrace 20%
- Sidewalk 60%
- Pavement 10%

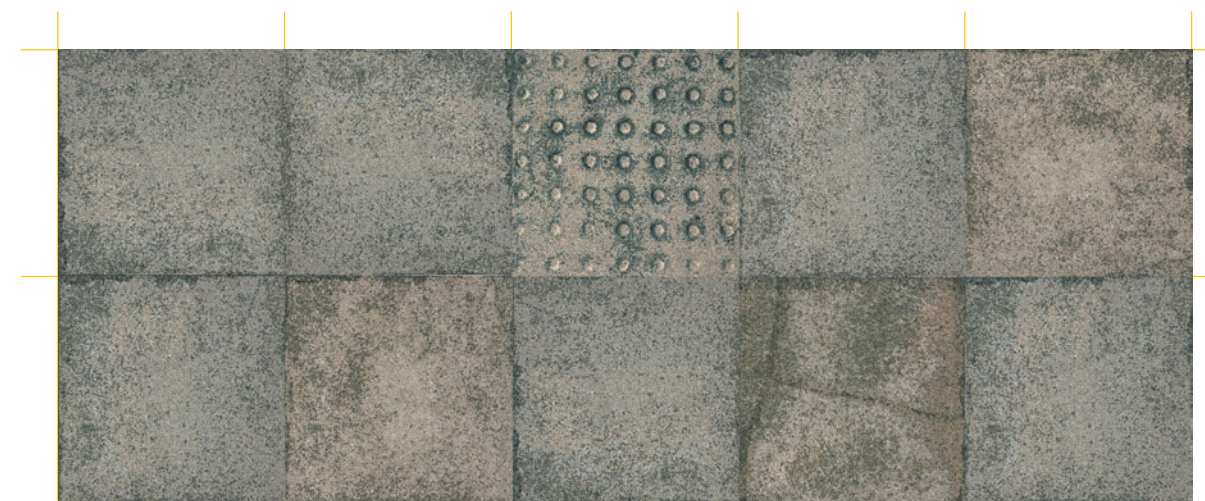
Assortment A (Natural) - P.1001-48



Assortment B (Grey) – P.1001-47, which includes:

- Terrace 40%
- Sidewalk 20%
- Junction 30%
- Pavement 10%

Assortment B (Natural) - P.1001-49



Assortment A (Grey) – P.1001-46



Assortment B (Grey) – P.1001-47